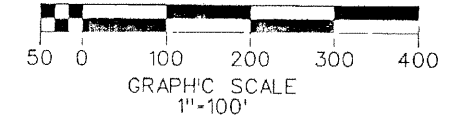
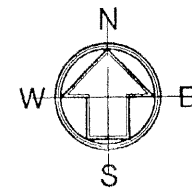


EQUESTRIAN CLUB

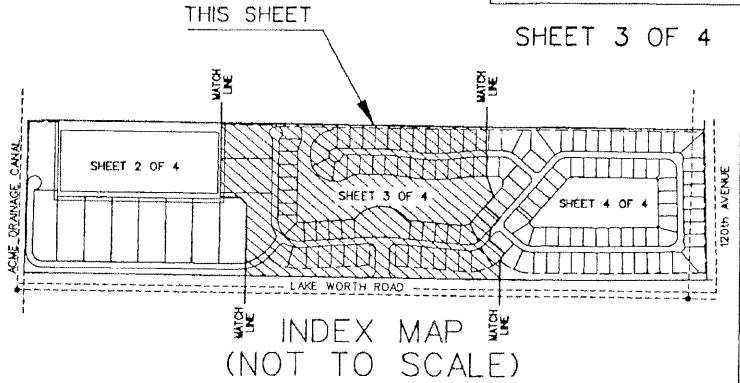
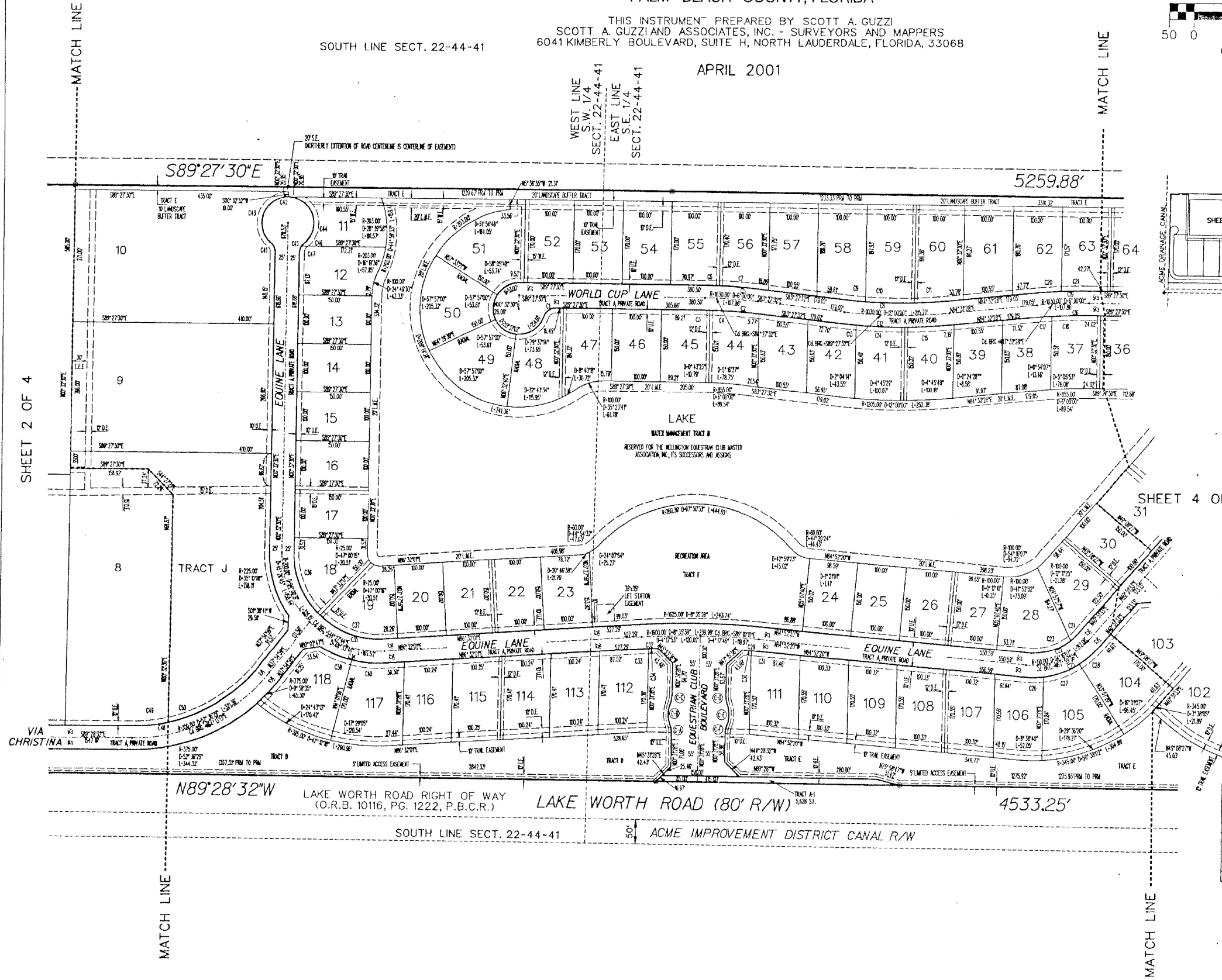
A PLANNED UNIT DEVELOPMENT
 A PORTION OF SECTION 22 AND SECTION 23,
 TOWNSHIP 44 SOUTH, RANGE 41 EAST, VILLAGE OF WELLINGTON,
 PALM BEACH COUNTY, FLORIDA

THIS INSTRUMENT PREPARED BY SCOTT A. GUZZI
 SCOTT A. GUZZI AND ASSOCIATES, INC. - SURVEYORS AND MAPPERS
 6041 KIMBERLY BOULEVARD, SUITE H, NORTH LAUDERDALE, FLORIDA, 33068

APRIL 2001



17



CURVE TABLE

NUMBER	RADIUS	DELTA	LENGTH	TANGENT	CHORD
C1	25.00	27°37'02"	32.22	8.77	26.96
C2	100.00	6°00'00"	105.24	52.87	105.20
C3	100.00	2°36'54"	43.79	5.39	43.79
C4	100.00	5°23'06"	54.46	17.26	54.47
C5	100.00	6°00'00"	60.48	29.29	60.43
C6	100.00	7°34'36"	79.03	44.52	79.07
C7	100.00	1°25'54"	16.45	40.74	16.43
C8	100.00	12°00'00"	21.43	65.53	21.47
C9	100.00	2°51'47"	40.87	20.44	40.86
C10	100.00	5°47'34"	50.05	30.07	50.01
C11	100.00	3°57'53"	59.57	34.82	59.56
C12	100.00	2°00'00"	220.96	10.89	220.56
C13	100.00	°30'30"	27.82	13.91	27.82
C14	100.00	5°29'02"	60.09	30.08	60.05
C15	100.00	5°03'53"	63.95	34.56	63.92
C16	100.00	6°29'02"	76.24	43.57	76.20
C17	100.00	7°39'52"	89.29	54.82	89.29
C18	100.00	4°29'08"	78.05	38.64	78.03
C19	100.00	6°39'02"	70.48	35.29	70.47
C20	100.00	2°51'46"	52.77	25.30	52.76
C21	100.00	3°38'34"	57.77	28.89	57.76
C22	100.00	5°48'57"	66.42	34.06	66.41
C23	100.00	4°22'43"	63.91	33.87	63.92
C24	100.00	7°12'34"	74.49	42.28	74.45
C25	175.00	5°48'02"	185.75	88.62	185.67
C26	175.00	6°35'27"	206.45	97.30	206.37
C27	175.00	25°39'38"	74.38	39.86	77.72
C28	175.00	10°29'27"	168.97	74.67	168.77
C29	175.00	°07'57"	31.09	6.54	31.09
C30	175.00	7°29'47"	182.23	87.17	182.13
C31	175.00	6°28'05"	182.87	87.47	182.87
C32	175.00	7°00'00"	217.77	102.87	217.76
C33	175.00	6°38'58"	212.22	102.87	212.22
C34	175.00	6°40'29"	215.55	102.87	215.55
C35	175.00	6°40'03"	215.77	102.87	215.99
C36	175.00	4°20'02"	243.57	118.87	243.57
C37	175.00	4°20'02"	243.57	118.87	243.57
C38	225.00	33°28'35"	158.87	72.33	157.72
C39	225.00	10°39'37"	213.31	102.87	213.31
C40	225.00	7°39'27"	243.66	118.87	243.67
C41	25.00	50°07'54"	21.87	10.89	21.86
C42	50.00	20°20'29"	42.75	21.87	42.85
C43	50.00	40°40'58"	21.87	10.89	21.87
C44	50.00	20°20'29"	42.75	21.87	42.86
C45	25.00	50°07'54"	21.87	10.89	21.86
C46	25.00	50°07'54"	21.87	10.89	21.86
C47	25.00	50°07'54"	21.87	10.89	21.86
C48	25.00	50°07'54"	21.87	10.89	21.86
C49	25.00	50°07'54"	21.87	10.89	21.86
C50	25.00	50°07'54"	21.87	10.89	21.86

- ABBREVIATIONS:
- B.M. - BENCHMARK
 - C - CALCULATED
 - CH.B.C. - CHORD BEARING
 - D.E. - DRAINAGE EASEMENT
 - E - EASING
 - E.E.E. - EQUESTRIAN EXERCISE EASEMENT
 - EL - ELEVATION
 - F.S. - FLORIDA STATUTES
 - INC. - INCORPORATED
 - L.A.E. - LIMITED ACCESS EASEMENT
 - L.M.E. - LAKE MAINTENANCE EASEMENT
 - L.S.E. - LIFT STATION EASEMENT
 - L.S.A.E. - LIFT STATION ACCESS EASEMENT
 - N - NORTHING
 - O.R.B. - OFFICIAL RECORDS BOOK
 - P.B. - PLAT BOOK
 - P.B.C.R. - PALM BEACH COUNTY RECORDS
 - P.C. - PAGE
 - P.O.B. - POINT OF BEGINNING
 - P.O.C. - POINT OF COMMENCEMENT
 - P.R.M. - PERMANENT REFERENCE MONUMENT
 - R/W - RIGHT OF WAY
 - S.E. - SEWER EASEMENT
 - U.E. - UTILITY EASEMENT
 - W.E. - WATER EASEMENT

ENTRY ROAD CURVE TABLE

CURVE	RADIUS	DELTA	LENGTH	TANGENT	CHORD
E1	50.00	20°20'29"	42.75	21.87	42.85
E2	50.00	40°40'58"	21.87	10.89	21.87
E3	50.00	20°20'29"	42.75	21.87	42.86
E4	25.00	50°07'54"	21.87	10.89	21.86
E5	25.00	50°07'54"	21.87	10.89	21.86
E6	25.00	50°07'54"	21.87	10.89	21.86
E7	25.00	50°07'54"	21.87	10.89	21.86
E8	25.00	50°07'54"	21.87	10.89	21.86
E9	25.00	50°07'54"	21.87	10.89	21.86
E10	25.00	50°07'54"	21.87	10.89	21.86

IT'S GOOD!
 SCOTT A. GUZZI & ASSOC., INC.
 Surveyors and Mappers
 6041 KIMBERLY BOULEVARD
 SUITE H
 NORTH LAUDERDALE, FLORIDA 33068

EQUESTRIAN CLUB